

# **AHS Emergency/Disaster Management**

**Darren Barber, B.Sc., CPHI(C), CEM  
Director, Emergency / Disaster Management  
Central Zone  
Alberta Health Services**

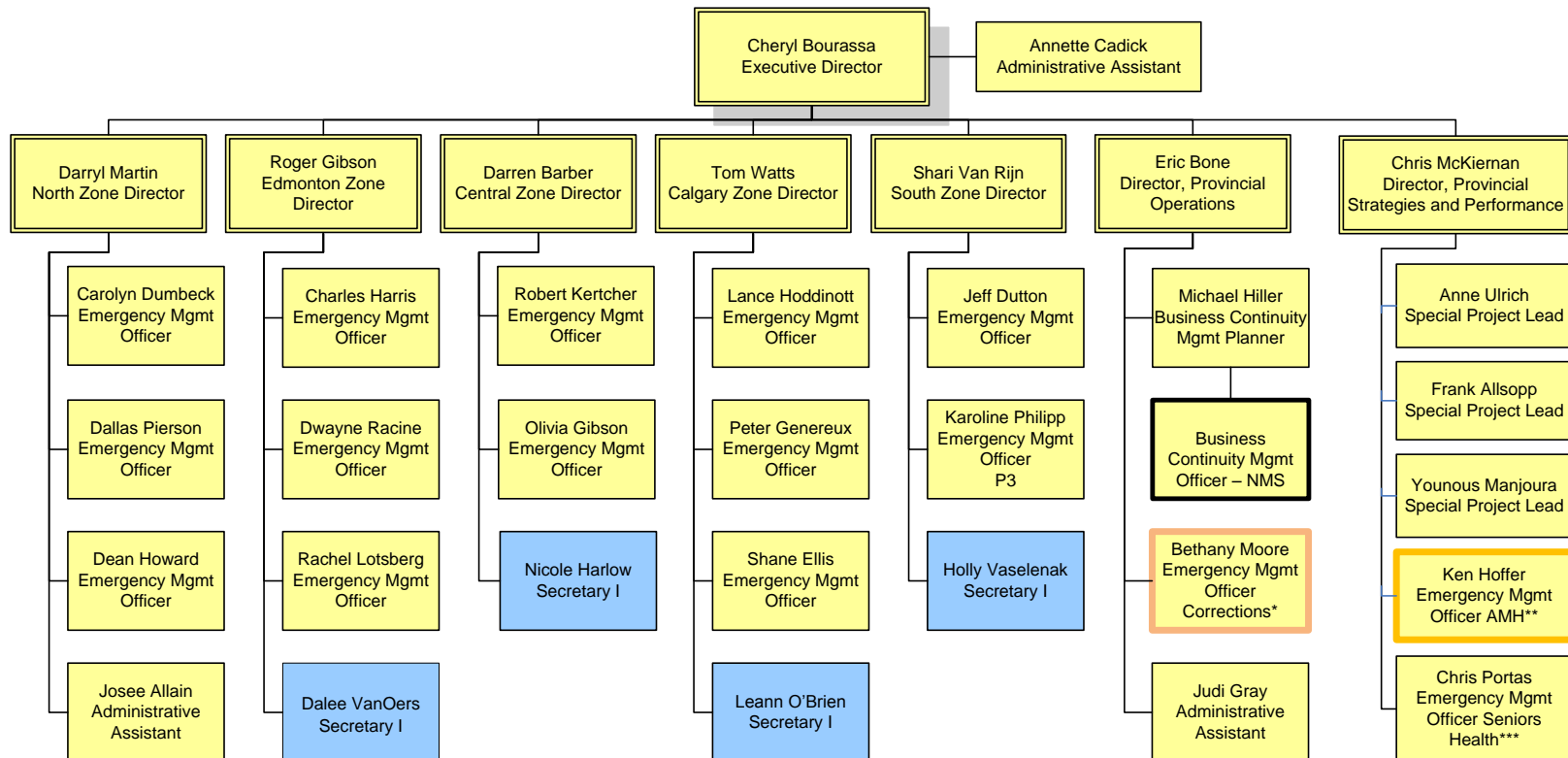
## Overview and Objectives

---

- AHS E/DM Program (Who We Are)
- AHS IMS (How We Operate)
  - Site/Service Command Post
  - ZEOC
  - ECC
  - POC
- Activations (AHS & Municipal / Industry)
- Q and A



# AHS Emergency/Disaster Management Program



# AHS Incident Management System

---

- Based on Comprehensive Emergency Management
  - CSA Z1600
- Utilizes the Incident Command System
- Multiple Response Levels – Local to Provincial
- All Hazards Approach
  - With Specifics Based On “Intuitive HRVA”...

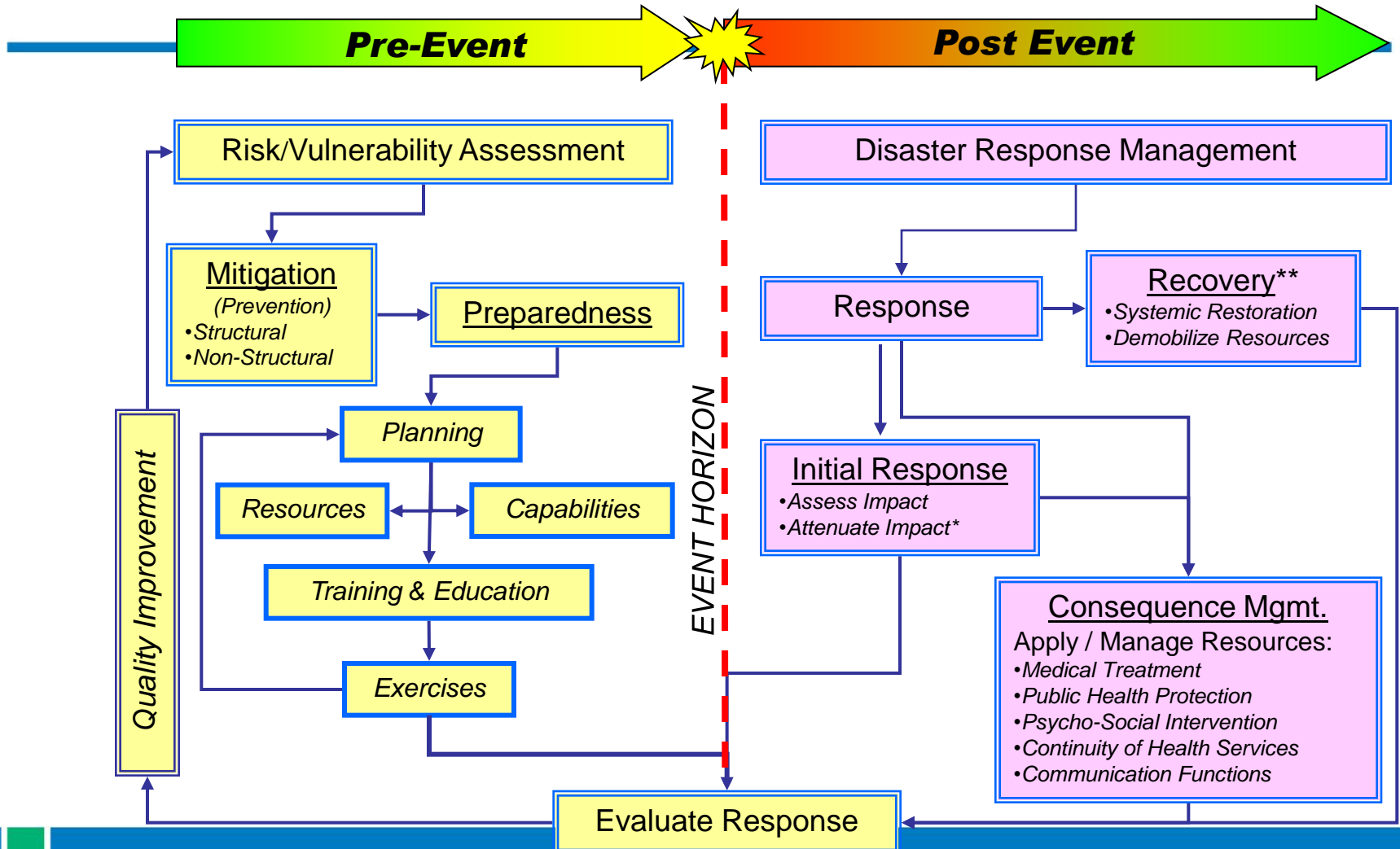
# The Emergency Management Cycle

- The pillars of emergency Management form the basis of emergency planning as shown to the right.
- The pillars of emergency management can also be considered as a continuum with all emergencies displaying these phases in various proportions depending on the nature of the event.



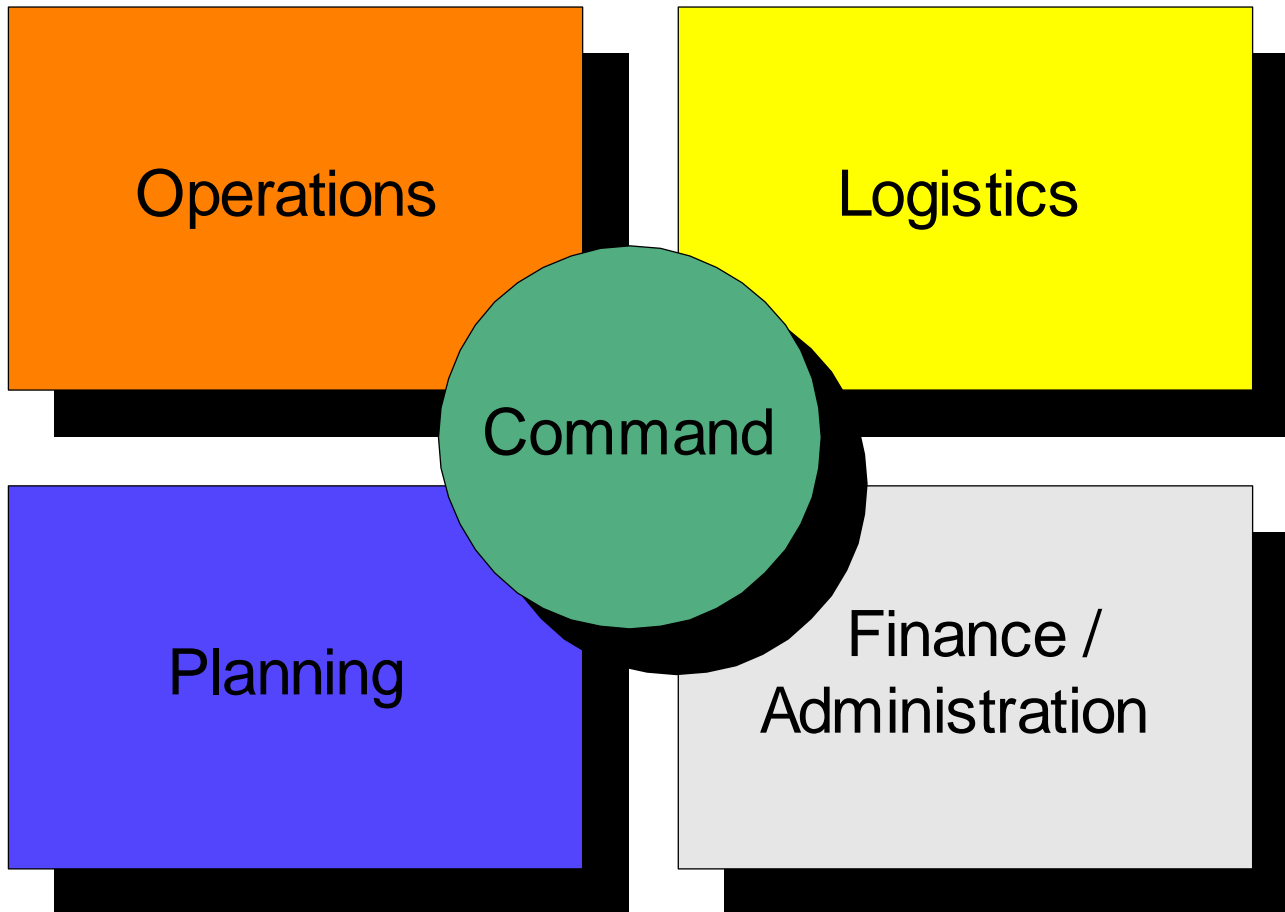
(NFPA 1600; CSA z1600)

# Comprehensive Health Emergency Management



# Five ICS Management Functions

---

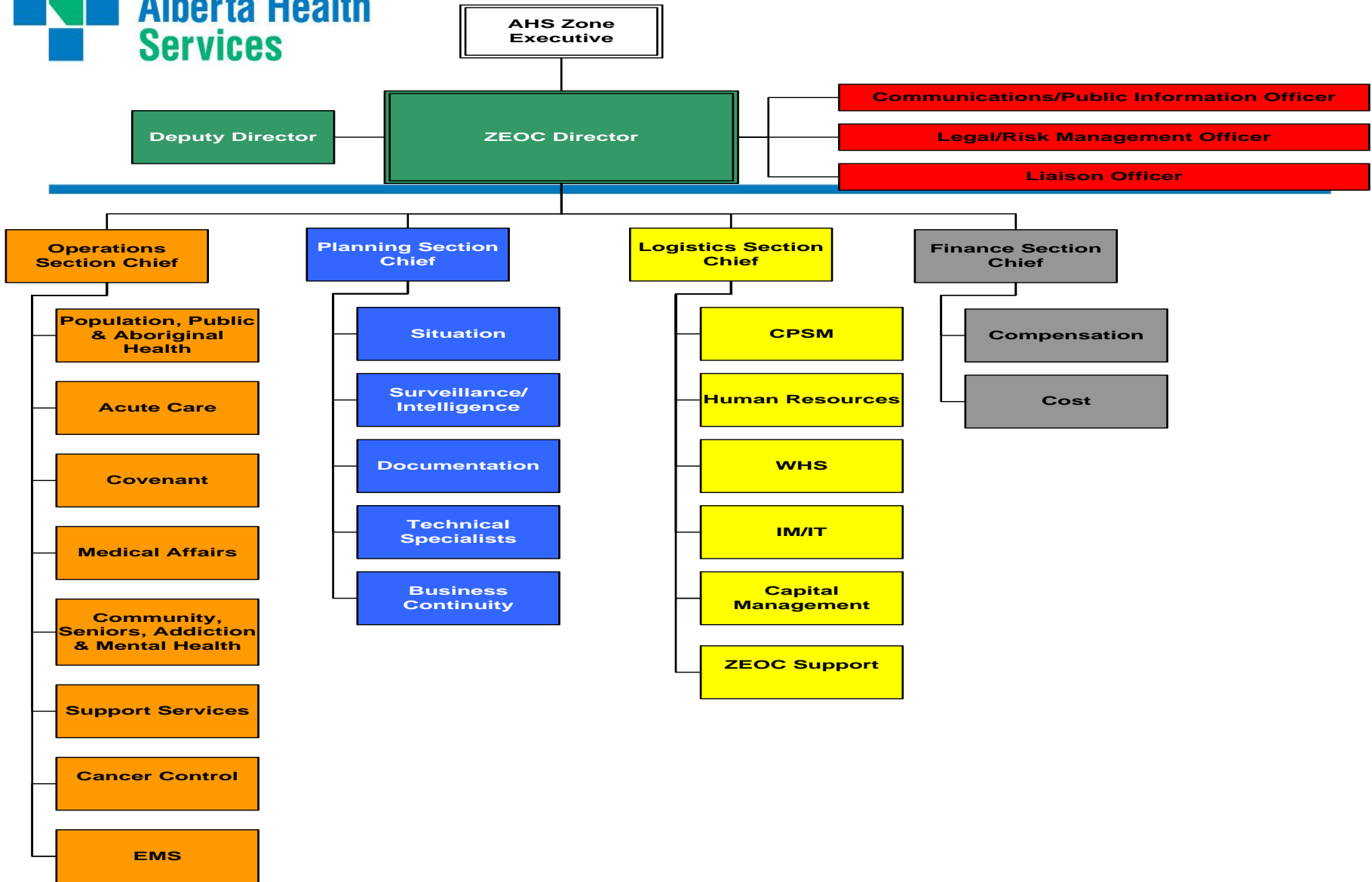




# Principles of ICS

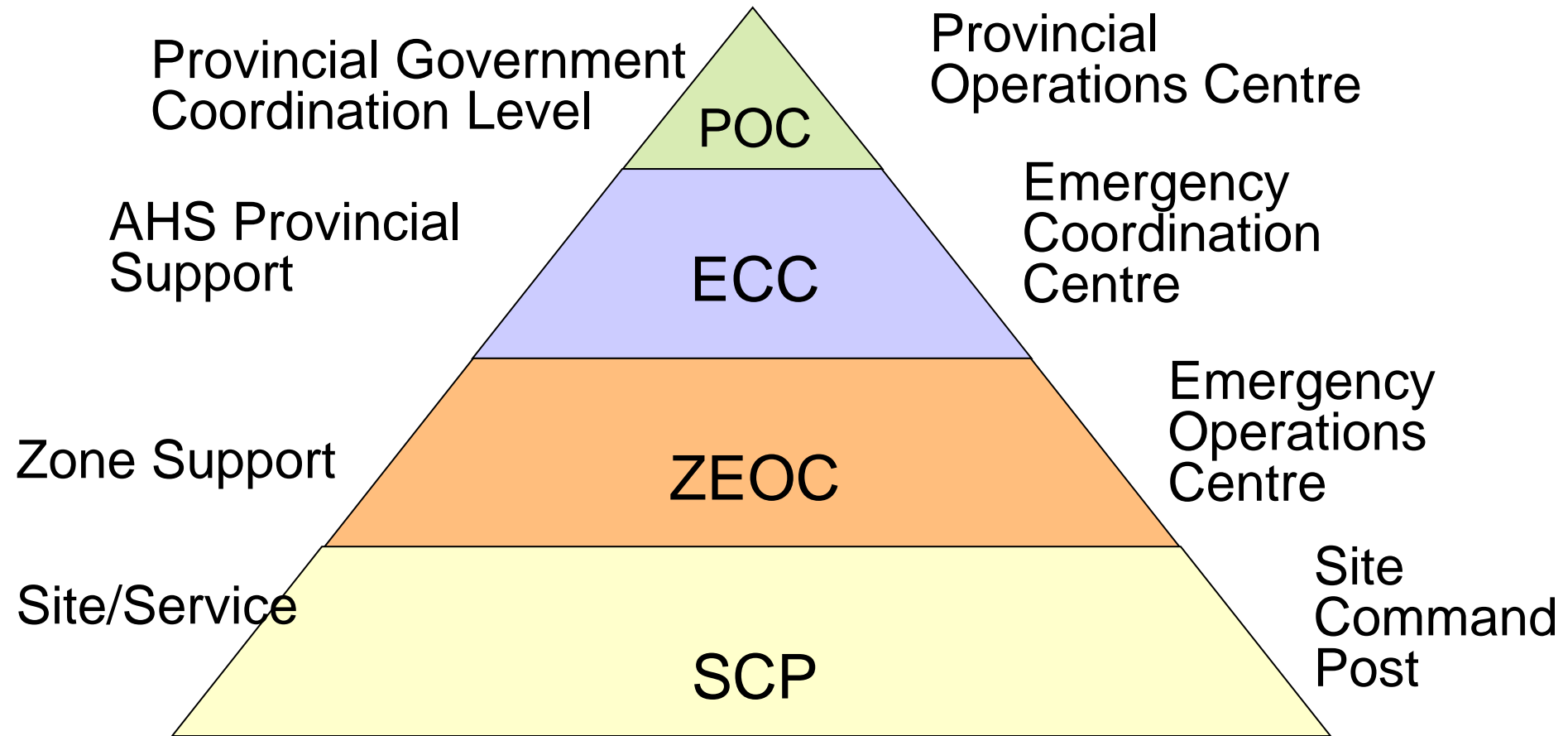
---

- **Standardization**
  - Common Terminology
- **Command**
  - Establishment and Transfer of Command
  - Chain of Command and Unity of Command
  - Unified Command
- **Planning/Organizational Structure**
  - Management by Objectives
  - Incident Action Plan
  - Modular Organization
  - Manageable Span of Control
- **Facilities and Resources**
  - Comprehensive Resource Management
  - Incident locations and facilities
- **Communications and Information Management**
  - Integrated information sharing
  - Information and intelligence management
- **Professionalism**
  - Accountability
  - Dispatch/Deployment

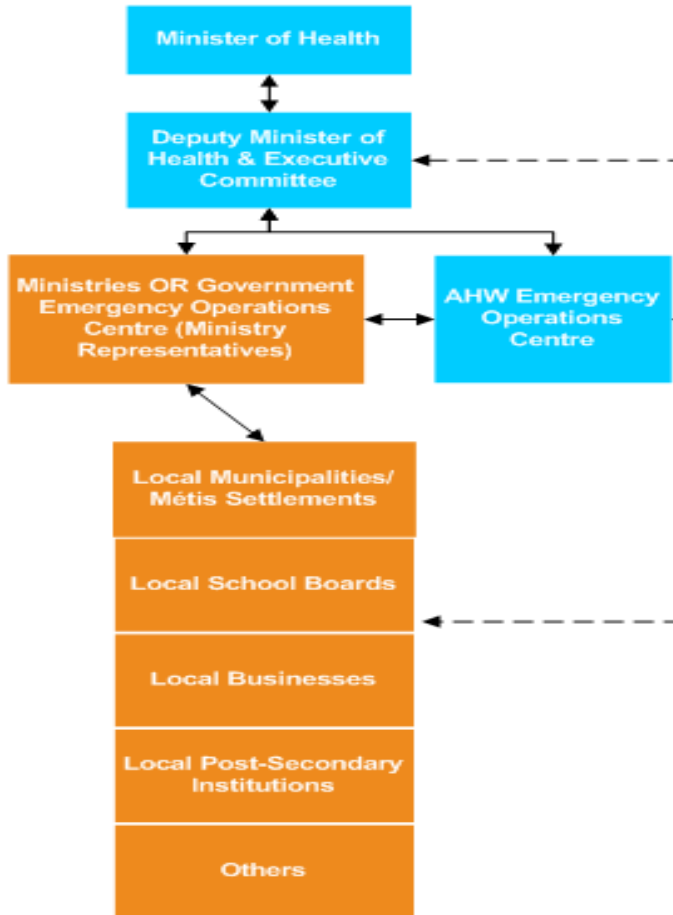


# IMS Levels

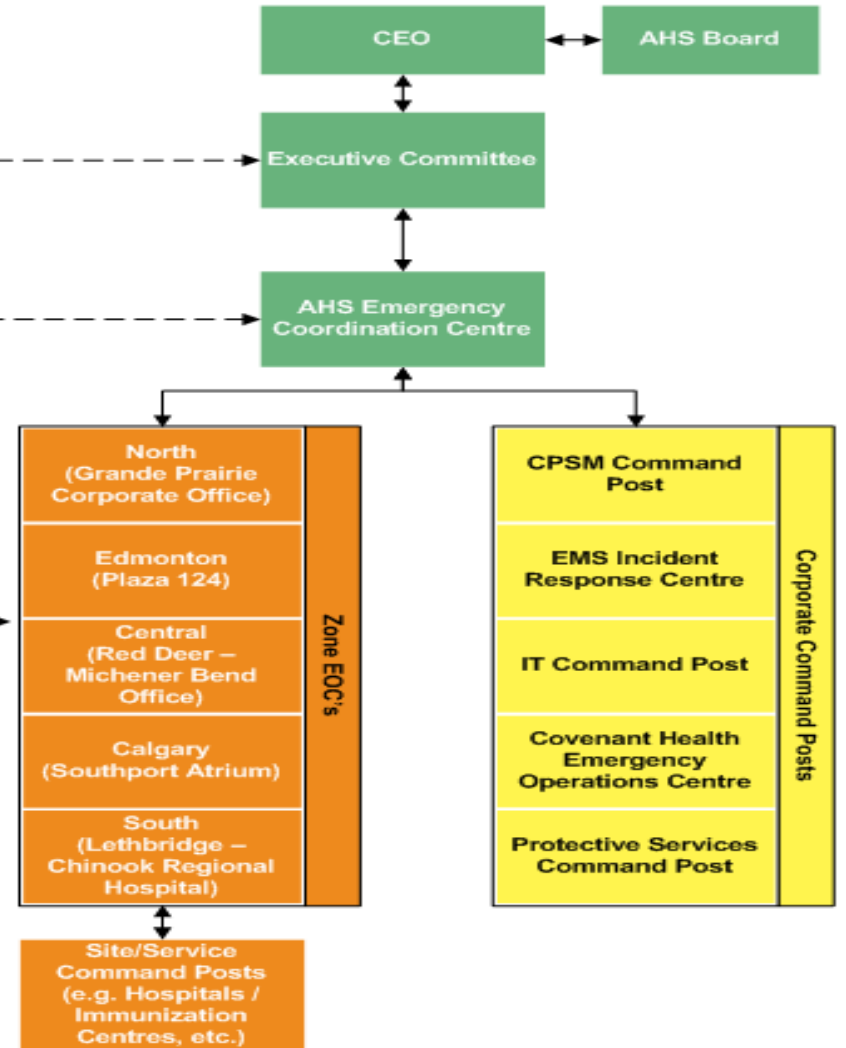
---



**Government of Alberta** ■  
Health and Wellness



**Alberta Health Services**



# Types of Activations

---

- Physical (“actual”):
  - Acute, high urgency events
    - Fires, floods, labour disruptions, evacuations, etc.
- Virtual:
  - Chronic, lower urgency events
    - Often Public Health related
      - Measles, Ebola, etc.

# “External Agency” EOC Activations

---

- Municipal / Industrial EOC
- AHS Representation (Who Will Go?)
  - EMS?                      - E/DM?
  - EPH?                        - Site Manager/Designate?
  - All of Them?
- Are You Representing AHS or Department??
- Must be Trained!!
- AHS Guide Has Been Developed (InSite)

# Thank you!

**AHS E/DM Webpage:**

**<http://insite.albertahealthservices.ca/edm.asp>**

**Further E/DM Training on AHS “My Learning Link”**